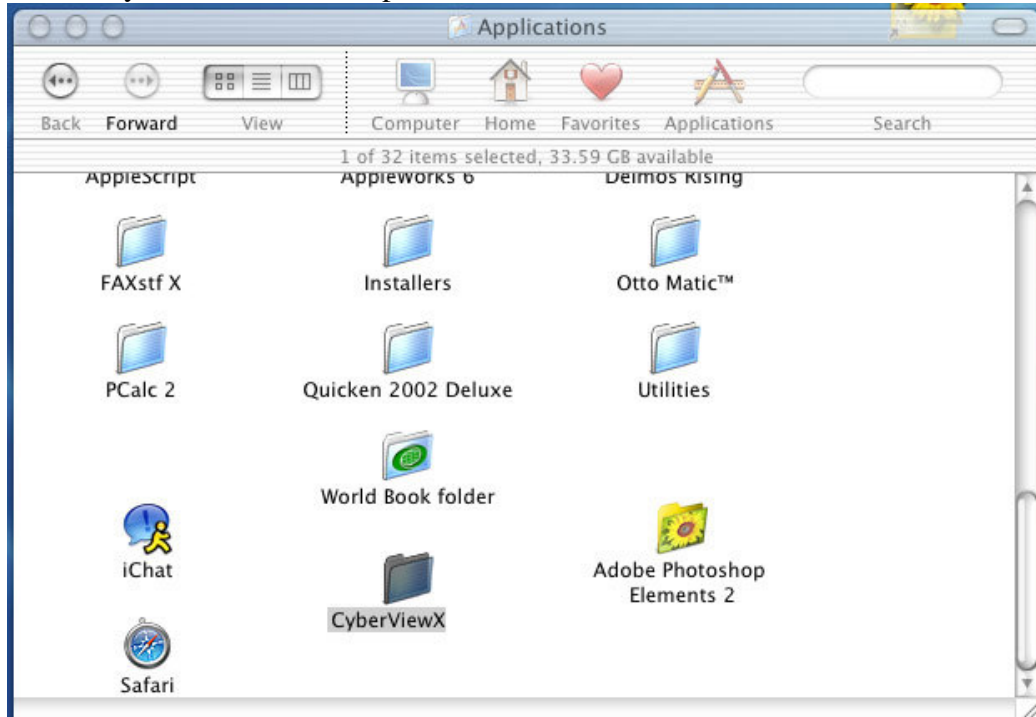


How to scan images and then import them into iPhoto (Mac OS X)

Using the Cyberview X application as a Stand alone scanning interface.

Perform these steps after the software and hardware have been installed properly.

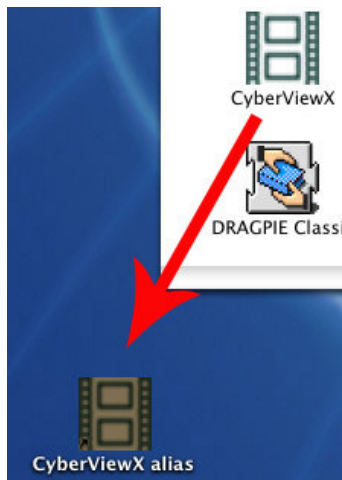
1. First open your Hard drive then open the Applications folder, in this folder locate the Cyberview X folder open it,



inside this folder you will see an icon named Cyberview X click ONCE on this icon to highlight it then go up to the Apple menu and click on FILE, then click on MAKE ALIAS (this will make a copy of the Cyberview X (called Cyberview X alias)



Now drag this ALIAS to your desktop, This driver will now allow you to scan images directly to a folder of your choosing and it gives you the option of TIF & JPG formats (TIF is uncompressed and JPG uses photo quality compression).



Scanning with Cyberview X

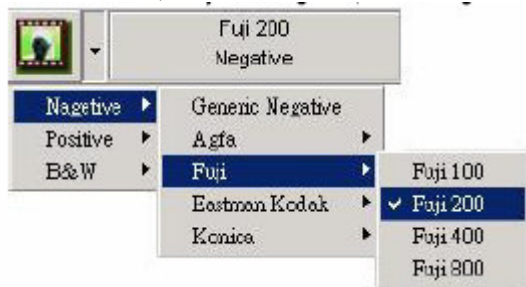
STEP 1 – Acquire Driver

Put the filmstrip or slide in the scanner (Release levers on either side of the scanning window pull them out to the left and right simultaneously, this opens the holder for insertion of media to be scanned), Now open the Cyberview X stand alone scanning application.

- ◆ Double click on the Cyberview X alias created earlier; this will open the stand alone scanning interface. Once open proceed as instructed below:

STEP 2 –Scan Setting...

Select the type of film to be scanned from the drop down menu inside the Cyberview Application, (by clicking on the small black down arrow beside the negative icon on the menu bar)



Select the film brand and speed.

EX : If the film is Agfa 200 Negative, select Negative Film > Agfa 200.

STEP 3 – Pre-scanning...

Press the "Prescan" button to pre-scan the slide or filmstrip.



【Pre-scan】

STEP 4 – To Set Desired Resolution...

Locate the free floating Active Frame Setting Window

And set the resolution desired for scanning your images, the default image resolution is 1800dpi. (Approx. 12MB per scan in 8-bit mode, 24 MB in 16-bit mode)

Notice: Higher resolution creates longer scanning times, and larger hard disk space used when saving the files.



【Active Frame Setting】

STEP 5 – To Scan

Choose “Scan Current Frame to File” to scan the current frame directly to appointed folder. (You can browse and create a folder in the location of your choice)

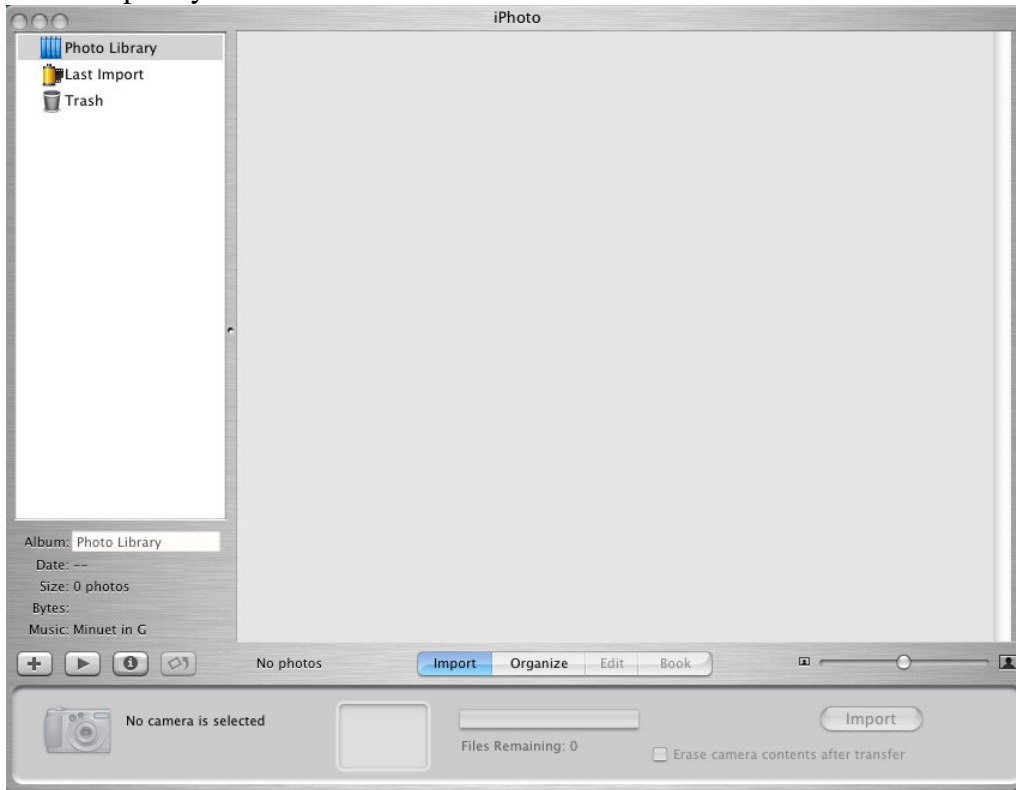


STEP 6 – Exit

Once you have completed scanning your images to file, on the file menu click on Scan –Exit to quit out of the Cyberview X stand alone application.

How to scan images and then import them into iPhoto (Mac OS X)...continued

Once you have completed scanning your images per the “How to Scan Film or Slide section” of this guide you are ready to import your photo’s for editing, printing etc. Open the Apple iPhoto application (located inside the Applications folder) Once it opens you will see this screen



Click on the menu bar on File → Import and browse to the location you saved your scanned images to in the “How to Scan Film or Slide section” of this guide. Double click on the image file name and it will import your image into the iPhoto application and that’s all there is to it, you are now ready to edit, print, and share your images. *Note: For assistance with iPhoto Application please refer to the help files provided by Apple.*