

This is the possible problem of PS3600 only scanning partial images
Here are some steps to verify and to adjust the Tappet. Tappet = Long thin silver bar that feeds the slides into the scanner.

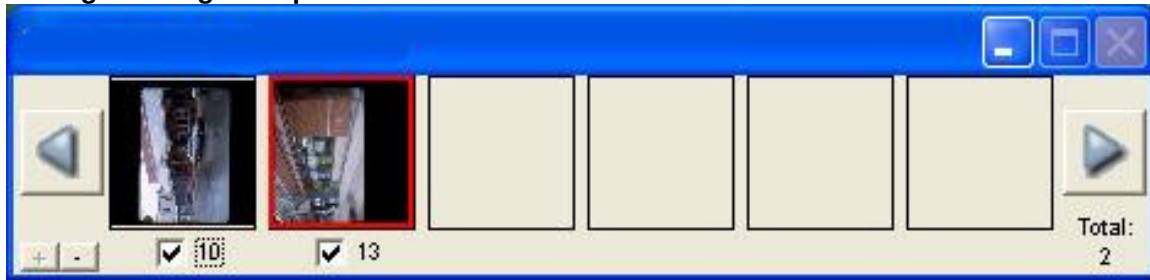
But first here are 2 important factors

1. The images below show the unit without the magazine make sure the user removes this to perform the observation of functionality
2. So the user needs to find a point of view, and to observe, between the Tappet and Slide. You may need to remove the cover for best viewing by removing the screws on the bottom of the unit

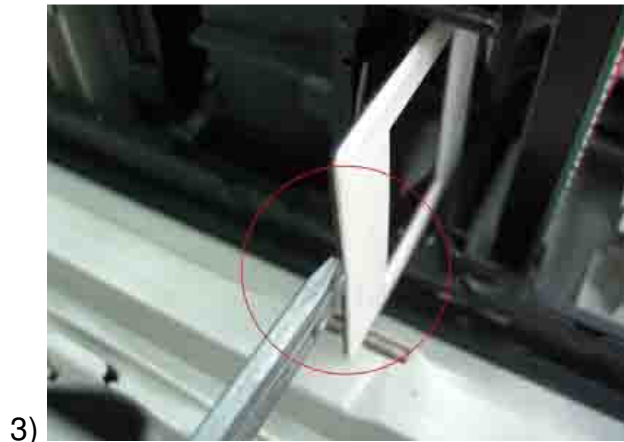
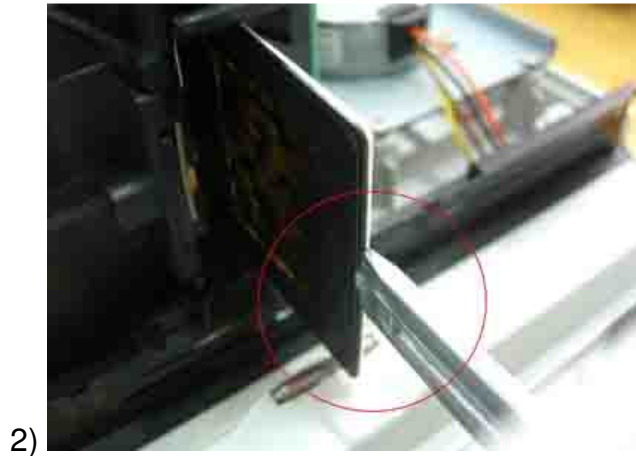
Status description:

1. NORMAL Images 1-3 shows the device is working normally.
The Tappet touches only the edge of the slide.
2. ABNORMAL Images 4-6 show the device is working improperly.
The Tappet doesn't touch the edge of slide, rather it is pushing it from either side, improperly aligned
So the incorrectly scanned images may appear As shown in frame 13 in Misaligned Image Sample.

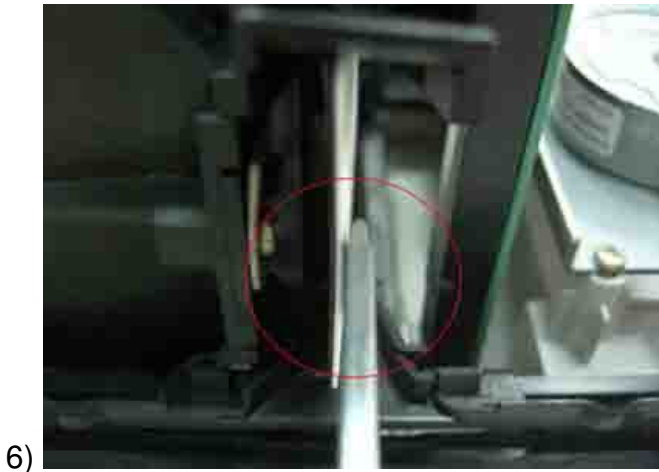
Misaligned Image Sample



NORMAL Images 1-3 show normal status.



Abnormal 4-6 shows abnormal status.



How to solve it?

Step 1. Pull the Tappet in the direction of the arrow as shown in (**Fig. 1**), if the Tappet on your unit is sliding past the slide on the right hand side, if it slides to the left side of the slide then you will need to pull the Tappet in the opposite direction than what is shown in Fig. 1

Step 2. User needs to insert a slide magazine with slides in it, and pull the Tappet in and out to change every slide by a hand.

Step 3. Verify the Tappet is now hitting the center of every slide instead of sliding past it to one side (as shown in ABNORMAL images)
If the problem persists, please try step 1 again.

Fig.1

