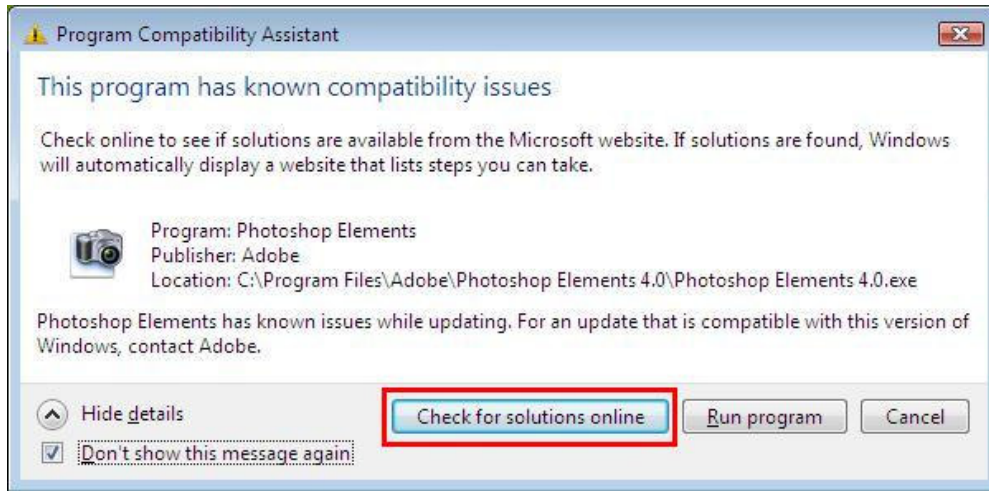
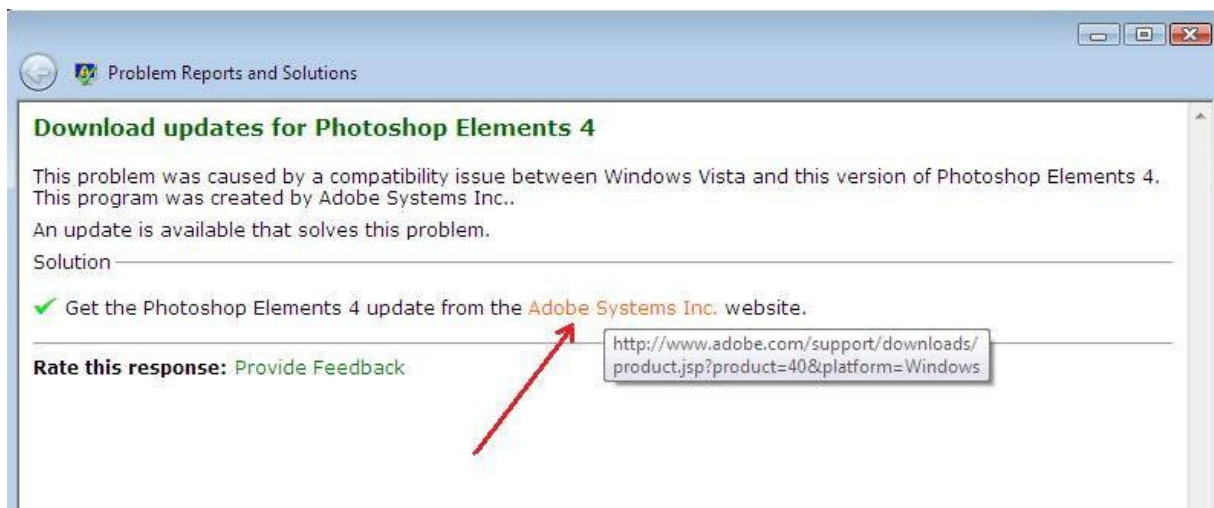


1. Get the PhotoShop Elements 4 update from the Adobe System Inc. website



2. Click “Adobe Systems Inc.



3. Download the following three files highlighted by the red frame

Version 4.0, 5.0		
Adobe DNG Converter and Camera Raw 3.7 update	4.0MB	2/18/2007
Camera Raw 3.7 update	2.1MB	2/18/2007
Version 4.0		
Adobe DNG Converter and Camera Raw 3.4 update	3.4MB	5/8/2006
Camera Raw 3.4 update	1.8MB	5/8/2006
Adobe Photoshop Elements 4.0 Help package - French	37.0MB	2/7/2006
Adobe Photoshop Elements 4.0 Help package - Dutch	37.2MB	2/7/2006
Adobe Photoshop Elements 4.0 Help package - Italian	37.2MB	2/7/2006
Adobe Photoshop Elements 4.0 Help package - Swedish	37.6MB	2/7/2006
Adobe Photoshop Elements 4.0 Help package - Spanish	37.1MB	2/7/2006
Adobe Photoshop Elements 4.0 Help package - German	37.0MB	2/7/2006
Camera Raw 3.3 update	1.6MB	1/19/2006
Adobe DNG Converter and Camera Raw 3.3 update	3.0MB	1/19/2006
Adobe Photoshop Elements 4.0 Help package - English	37.0MB	1/18/2006
Tutorial sample files	2.4MB	12/9/2005
Version 3.2		

#### 4. Installation instructions after downloading “Camera Raw 3.7 update (the 1<sup>st</sup> update)”

##### To install with Adobe Photoshop Elements 4.0:

1. Exit Photoshop Elements.
2. Open My Computer.
3. Double-click Local Disk (C:).
4. Navigate to: **(Please read directory carefully)**

Program Files\Adobe\Photoshop Elements 4.0\Plug-Ins\File Formats

5. Move the existing **Camera Raw.8bi** plug-in to another location (for example, a new folder on your desktop). Ensure you keep this version in case you need to revert back.
6. Copy the Camera Raw plug-in, **Camera Raw.8bi**, from the download into the same folder as in Step 4.
7. Launch Photoshop Elements.

#### 5. Installation instructions after downloading “Adobe PhotoShop Elements 4.0 Help package - English”

##### Installation Instructions

After downloading a “.zip” file, use the operating system or a utility such as WinZip or PKZIP to access the file's contents.

Need help with downloading? See our [Downloading Help documents](#).

1. Exit Photoshop Elements 4.0 and the Adobe Help Center.
2. Copy the entire ZIP file (do not unzip!) to the Program Files\Adobe\Adobe Help Center\AdobeHelpData\Packages folder.
3. Launch the Adobe Help Center EXE file in Program Files/Adobe/Adobe Help Center/ahc.exe to allow the Help Center to process the Help package.
4. Exit the Adobe Help Center.

#### 6. Installation instructions after downloading “Tutorial sample files”

##### Installation Instructions

After downloading a “.exe” file in Windows, double-click on the “.exe” file to access the file's contents.

Need help with downloading? See our [Downloading Help documents](#).

Unzip these files to the same directory as the Photoshop Elements application, usually C:\Program Files\Adobe\Photoshop Elements 4.0.

#### 7. Now open Adobe Photoshop, then Check “Don’t show this message again” , then click “Run program”

