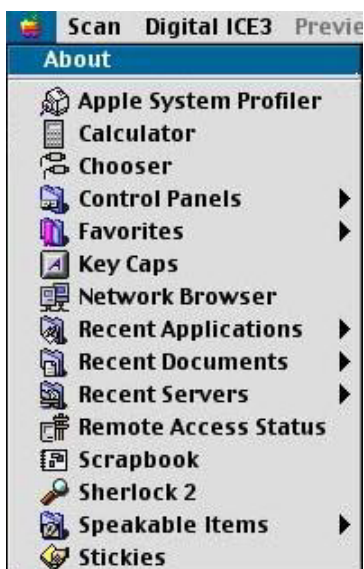


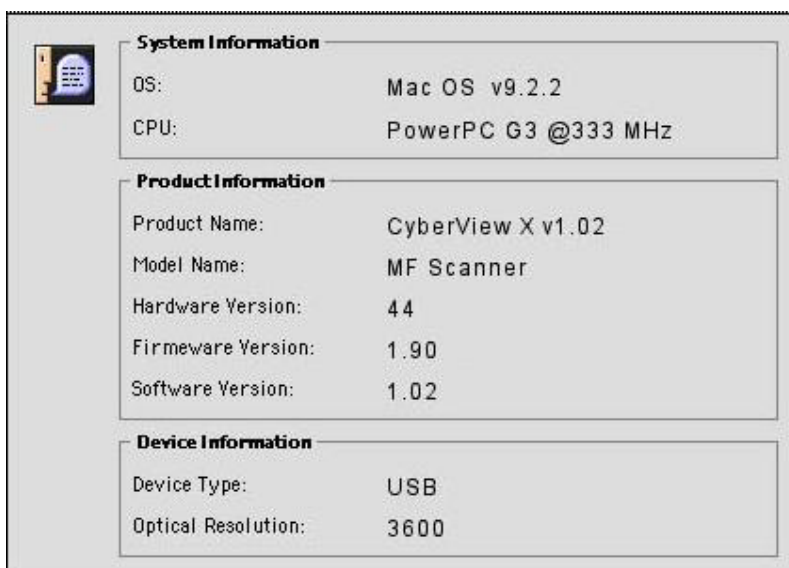
How To Check The Version of Firmware?

MAC OS 9 User

1. Import the “CyberView X” user interface and choose “Apple > About...” in main menu.



2. Check the “Firmware Version”.

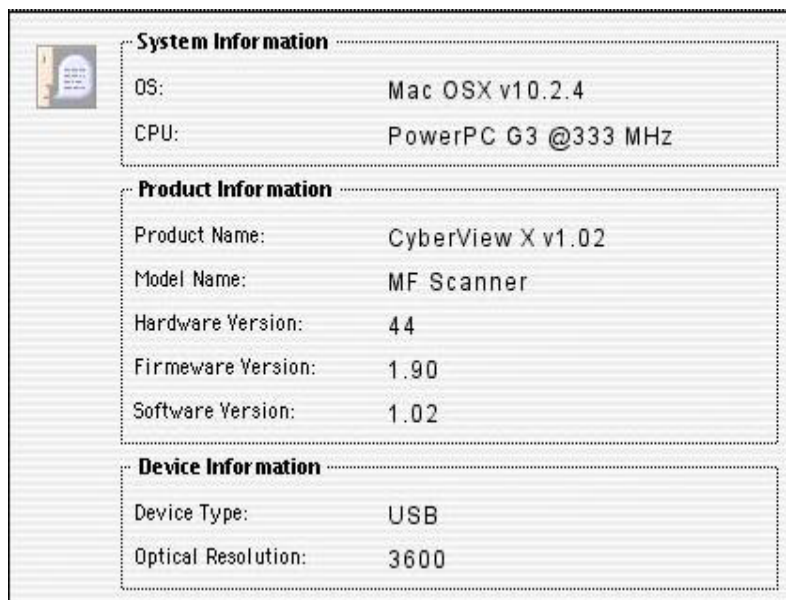


MAC OS X User

1. Import the “CyberView X” user interface and choose “Photoshop Elements > About...” in main menu.



2. Check the “Firmware Version”.



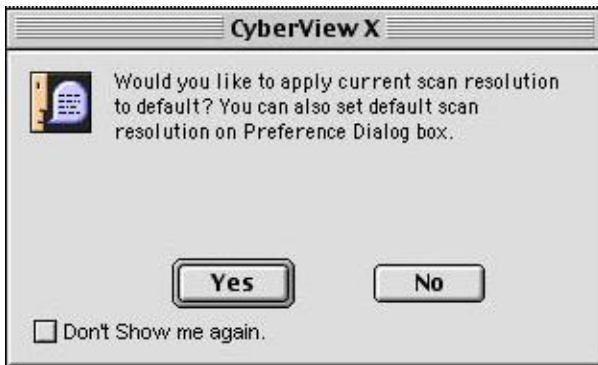
How To Upgrade The Firmware?

MAC OS 9 User

1. Open the CyberView X user interface and choose “Help > Update Firmware” from main menu.



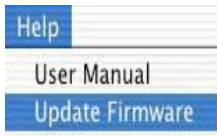
2. Open the firmware file from the path you save.
3. The new firmware program will upgrade automatically and take about 20 seconds.
(Note: Don't disconnect the cable between scanner and computer or turn off the scanner during the firmware upgrade.)
4. The upgrading complete when a success upgrade notice pop up. Then, click “OK” and the firmware upgrading is complete.
5. Choose “Scan > Exit” in main menu to close the CyberView X user interface.
6. Click “Yes” to save the last resolution setting then exit the CyberView X user interface or “No” to exit the CyberView X user interface without saving.



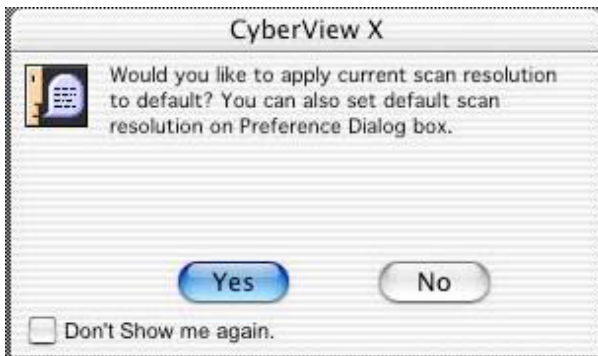
7. Please reset the power of scanner.
8. Open the CyberView X user interface.

MAC OS X User

1. Open the CyberView X user interface and choose “Help > Update Firmware” from main menu.



2. Open the firmware file from the path you save.
3. The new firmware program will upgrade automatically and take about 20 seconds.
(Note: Don't disconnect the cable between scanner and computer or turn off the scanner during the firmware upgrade.)
4. The upgrading complete when a success upgrade notice pop up. Then, click “OK” and the firmware upgrading is complete.
5. Choose “Scan > Exit” in main menu to close the CyberView X user interface.
6. Click “Yes” to save the last resolution setting then exit the CyberView X user interface or “No” to exit the CyberView X user interface without saving.



7. Please reset the power of scanner.
8. Open the CyberView X user interface.